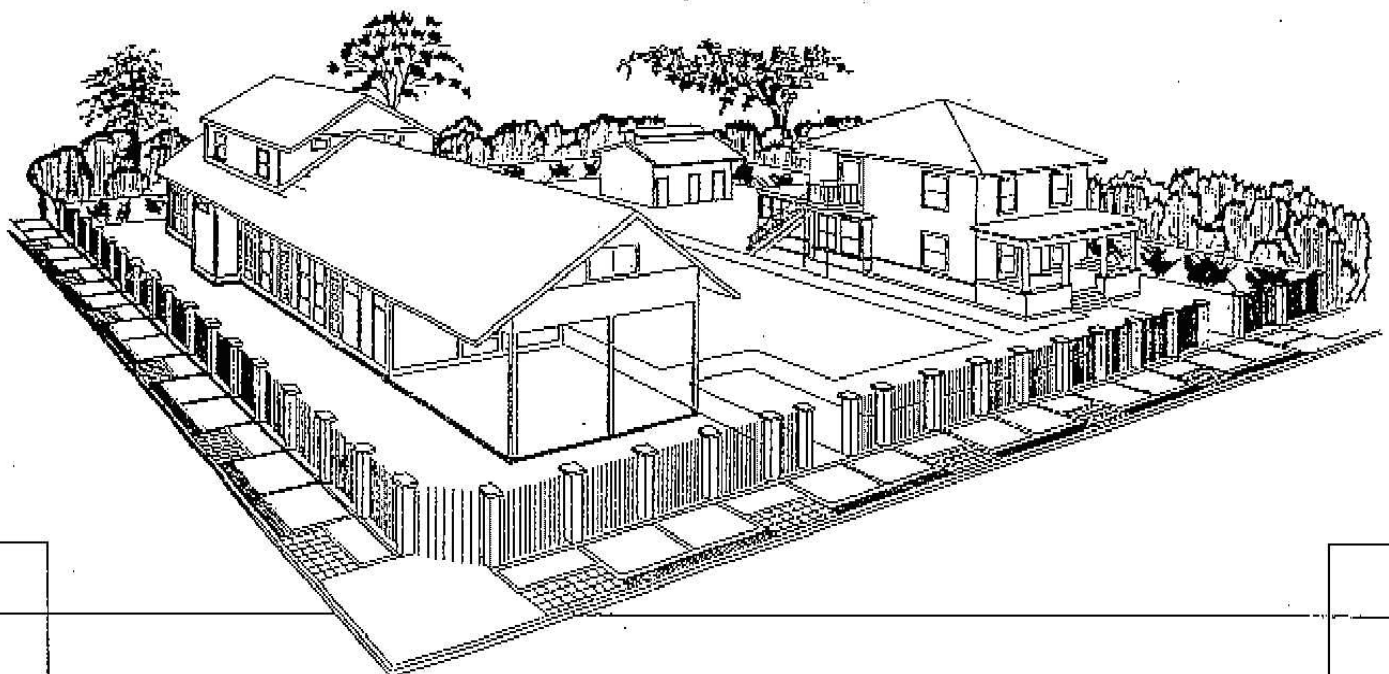


ALTA DISTRICT HISTORICAL SOCIETY

PRESERVE
YOUR FAMILY
NAME
FOR POSTERITY

FOR ONLY \$1250.

You are a part of our history, and you owe it to your children, grandchildren, great-grandchildren, and posterity to remind them you were here, that this corner of our country was part of your life. If you don't preserve it, who will?



CAST BRONZE PLAQUES WITH FAMILY NAMES WILL BE PLACED ON EACH BRICK PILASTER OF OUR WROUGHT IRON FENCE AS SHOWN IN THE ILLUSTRATION.



Now your Historic the beautiful wrought iron gateways. The thirty-five red brick pilasters used for the bronze plaques may be placed on each pilaster. Donors of \$1,250 will receive a tax exempt donation for the pilaster used for you. Draw.

DETAILS

The fence will be constructed with a 4" x 4" steel reinforced concrete base. There will be a 4" x 4" cap four inch square, decorative design permanently secured with bolts. The bolts will be placed in the concrete.

The family name on the plaque in the illustration is just one example of how it can be used. Yours will be made individually to your specifications and wording. Only the size (8 X 10) and the borders will remain constant for each plaque. The family name should be dominant, but the size of the type used will be determined by the length of the name. Obviously, the names "VOSE" or "ELY" will be larger than the names of "EICHENBERGER" or "CLOTFELTER". Thought should be given to include the female side of the family so it will not be lost in the dust of history.

Please fill out the application with the exact copy you wish to use on your plaque. You will be sent a proof of the wording and how it will appear for your approval before it is permanently die cast in bronze. Your donation will cover all production costs.

Donations may be made in one lump sum of \$1250, in five equal monthly installments of \$250, or in eleven equal monthly installments of \$100 and one payment of \$150. Those who have previously donated \$500 to \$1000 need to send in the difference of \$1250. Those who have donated more will receive a larger bronze plaque in a different location.

The money raised from these donations will be used to cover the cost of building the fence and foundation. The remainder will go for finishing our buildings and landscaping the area. There is a lot of high-priced talent working to bring our project to completion, and it isn't costing a cent. The best things in life are free!

FIRST COME, FIRST SERVED

This offer is being made to over 4,000 graduates of the Dinuba and Orosi High Schools, but we can accommodate only 105 Family Plaques on the pilasters of our wrought iron fence. Acceptance of your application will be on a first come, first served basis. Send in your application and donation as soon as possible.

Society is ready to build iron fence with decorative where commemorative for your family. Three each six foot pilaster. First five top positions. This the designation of which nily plaque will be chosen by

CONSTRUCTION

placed on a continuous foundation. Pilasters will be constructed of concrete six feet high and sixteen inches wide. The concrete will be finished with red brick facing on four sides. The concrete will be finished with concrete p. The wrought iron will be one inch thick. The bronze plaques will be placed on the pilasters by internal expansion. To prevent damage, the plaques will be set inward to the yard area.

ALTA DISTRICT HISTORICAL SOCIETY



APPLICATION FOR BRONZE FAMILY PLAQUE

NAME _____

ADDRESS _____

CITY _____ STATE _____ ZIP _____

PHONE (PLEASE INCLUDE AREA CODE) _____

EXACT COPY WANTED ON YOUR BRONZE PLAQUE

METHOD OF PAYMENT

- Enclosed is my check for \$1250.
- Enclosed is my check for \$250. I pledge to send \$250 per month for the next four months.
- Enclosed is my check for \$150. I pledge to send in \$100 per month for the next eleven months.
- Enclosed is my check for \$_____ to make up the difference between what I have donated, and \$1250.

PLEASE ENCLOSE
THIS FORM WITH YOUR
CHECK AND MAIL IT TO:

ALTA DISTRICT HISTORICAL SOCIETY
P.O. BOX 254
DINUBA, CA 93618